

High-Profile Wrap-N-Weigh Shown



Low-Profile Wrap-N-Weigh Shown

FEATURES AND BENEFITS

Machine Features

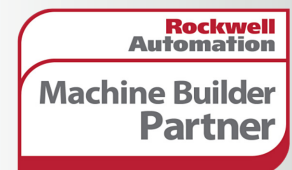
- Heavy-duty, welded-steel construction (no plastic panels) designed for long life
- Variable turntable speed using 1/2 hp, 90 Vdc motor with ANSI 50 chain drive system
- Up to 12 RPM rotating table can deliver 25–40 loads per hour
- Long range photo eye for automatic load height sensing
- Adjustable top and bottom illuminated LED wrap counters
- Cycle pause feature
- Top film overwrap control feature (TOC)
- Electronic film tension adjustment control on control panel
- Independent up and down film carriage controls with jog up/down switch
- Manual jog control for turntable
- Two available wrap patterns
- Dual chain film carriage lift
- Eco-friendly, durable powder coating

Controls Hardware

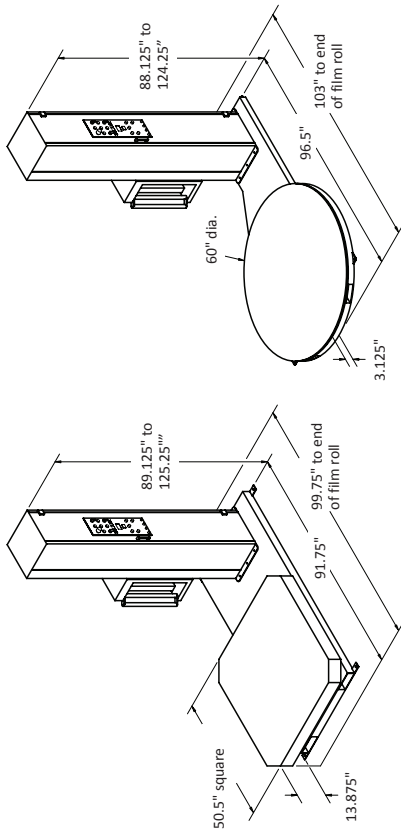
- Allen-Bradley® power, control, and safety components
- Allen-Bradley® MicroLogix™ PLC
- UL/CSA approved components

OPTIONS

- Access ramps to assist loading of pallet
- Automatic film tear device (AFTD) tears film at the end of the wrapping cycle
- Extended film towers for wrapping tall loads exceeding standard machine capability
- Cold and freezer packages available
- Adjustable manual roping guide
- Pneumatic roping device for extra load support
- 30" film delivery system
- Other NEMA rated control enclosures available
- Top platen device to stabilize tall or light unstable loads during rotation
- 6,000 lb. and large diameter turntables available
- Integrated scale and printer available



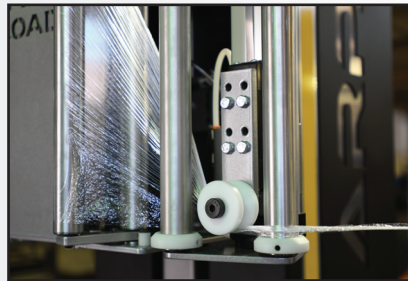
Note: Final Layout May Vary



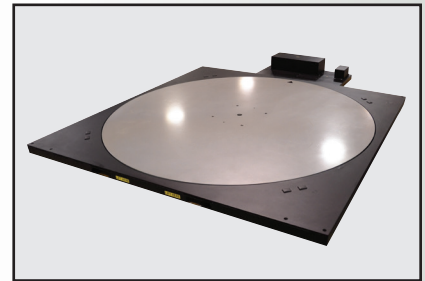
| Specification | Measurement |
|---|--|
| Turntable size – low-profile | 60" diameter (standard) 72" diameter (optional) (Larger sizes available) |
| Turntable size – high-profile | 50" square (standard) 50" x 90" rectangular (option) |
| Max. load diagonal clearance | 85" (standard turntable) 102" (optional turntable) |
| Max. load weight | 4,000 lb. (standard) 6,000 lb. (option) |
| Turntable rotation speed | Up to 12 RPM |
| Variable carriage speed | Up to 21 FPM |
| Loads wrapped per Hour | 25 to 40 |
| Max load height – low-profile: - Standard power - Optional extensions available (12, 24, and 36") | 83" max load height 95", 107", and 119" options |
| Max load height – high-profile: - Standard tower - Optional extensions available (12", 24", and 36") | 74" max load height 86", 98", and 110" option |
| Electrical power requirements | 120 Vac, 1 Ph, 60 Hz, 10 A, 1.2 kW |
| Standard shipping weight | Low-profile 1,350 lb. High-profile 1,260 lb. |



Optional Ramps Available



Optional Automatic Roping Device



Optional 90" Table

Complete Aftermarket Service & Support for Your Packaging Equipment

SUPPORTPRO™

A DURAVANT SERVICE

Call **844.777.8776** for your regional tech

24/7 Help Available



THE DURAVANT FAMILY OF COMPANIES

MARLEN INTERNATIONAL | ARPAC | HAMER-FISCHBEIN | FISCHBEIN INTERNATIONAL | MESPACK | FMH CONVEYORS

www.duravant.com